

STERN 87

Gearless Traction Machine

www.sharpeengineers.com



Voltage 400 V



Roping 2:1



Brake 110 VDC



Max. Static Load 3400 Kg



Weight of Machine (kg) 150*

* Weight of machine is varies according to selection of sheave, Motor & Drive system.



Gearless Traction Machine

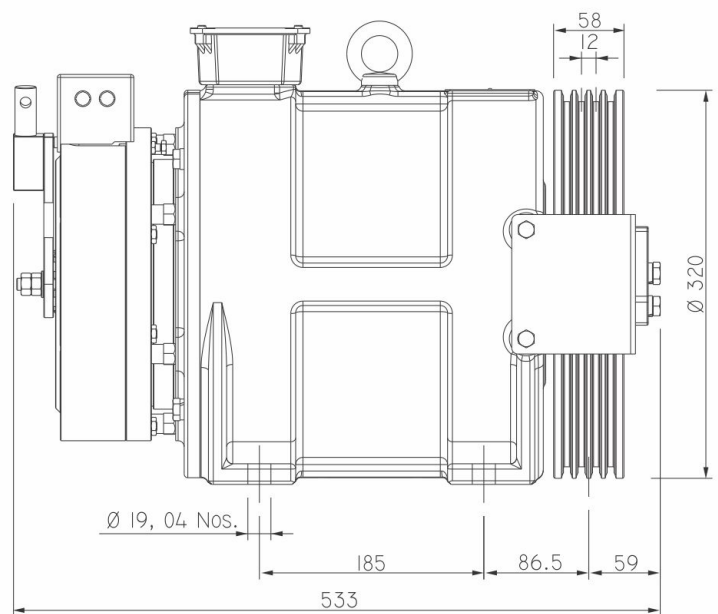
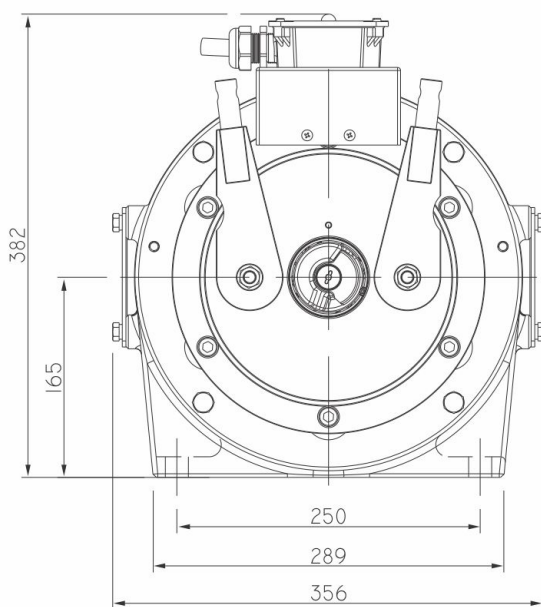


STERN 8₁

Gearless Traction Machine

Specification	Load (kg)	Lift Speed (m/s)	Height (m)	Sheave Dia (mm)	No. of Groove X Rope Dia	Current (A)	Toque (Nm)	Rated Speed (rpm)	Frequency (Hz)	Power (kW)	Pole	Rating	INS Class.	IP Code
ST81-8P1B0	544	1.00	≤ 60	Ø320	4 X Ø8.0	9.2	305	119	19.9	3.8	20	S5 (40%)	F-Class	IP-40

Kindly contact us for various speed and load combination



- (All dimensions are in mm)
- Subject to change without any prior notice!